

Radiant Tube Heaters

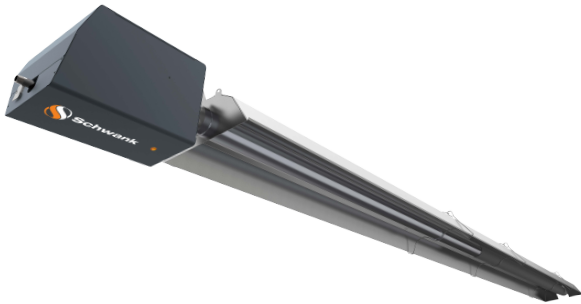
superTube SST Series

Performance and efficiency reinvented

New! Built with an EC Motor and models ranging from 50,000 – 250,000 [BTUhs], and 20 ft to 80 ft system lengths across single-stage, two-stage, and modulating tube heating models.

Heater Models Available (input/length):

50,000 Btuh - 20', 30', 40'	180,000 Btuh - 50', 60', 70'
65,000 Btuh - 20', 30', 40'	205,000 Btuh - 50', 60', 70'
80,000 Btuh - 20', 30', 40'	225,000 Btuh - 60', 70', 80'
115,000 Btuh - 30', 40', 50'	250,000 Btuh - 60', 70', 80'
130,000 Btuh - 30', 40', 50'	
155,000 Btuh - 40', 50', 60'	



premierSchwank

High Comfort Indoor Radiant Heaters with Low Fuel Costs

These Schwank infrared tube heaters provide quiet and clean heating solutions and have rightfully earned its title as the indoor radiant heater with the best efficiency rating in North America when compared to other non-insulated tube heaters.

Heater Models Available (input/length):

45,000 Btuh - 20'	100,000 Btuh - 20'	150,000 Btuh - 40', 50', 60'
60,000 Btuh - 20', 30'	110,000 Btuh - 30', 40', 50'	175,000 Btuh - 50', 60', 70'
80,000 Btuh - 20', 30', 40'	130,000 Btuh - 30', 40', 50'	200,000 Btuh - 50', 60', 70'

Also available in P40 Pre-Assembled U-Tube Model



builderSchwank

Ideal for indoor applications

One of the most economical radiant tube heaters on the market for spot heating distribution and production facilities. Built using Schwank's low cost heating system design, the **builderSchwank** energy efficient heater provides comfort and a quick payback period.

Also available in 2-Stage (SET) model

Dual firing rate capability for controlled comfort

The 2-Stage heating system lowers energy consumption and increases equipment life by reducing ON/OFF cycles. The dual firing rate allows for a controlled comfort level with a high intensity and low intensity heat setting to provide more or less heat when required.

Both models are available in P40 Pre-Assembled U-Tube Model

Single Stage Heater Models Available (input/length):

45,000 Btuh - 20'
60,000 Btuh - 20', 30'
80,000 Btuh - 20', 30', 40'
100,000 Btuh - 20'
110,000 Btuh - 30', 40', 50'
130,000 Btuh - 30', 40', 50'
150,000 Btuh - 40', 50', 60'
175,000 Btuh - 50', 60', 70'
200,000 Btuh - 50', 60', 70'

2-Stage Heater Models Available (input/length):

80,000/60,000 Btuh - 20', 30'
110,000/75,000 Btuh - 30', 40'
130,000/90,000 Btuh - 30', 40'
155,000/110,000 Btuh - 40', 50'
175,000/110,000 Btuh - 40', 50'
200,000/140,000 Btuh - 50', 60'

Radiant Tube Heaters

duraSchwank

Radiant Heating Solutions for **Damp Environments**

Heavy duty yet efficient radiant tube heater designed for wet indoor and outdoor applications. Also includes a corrosion-resistant and moisture-resistant burner enclosure, plus heater tube and reflector system.



Heater Models Available (input/length):

45,000 Btuh - 20'	110,000 Btuh - 30', 40', 50'	175,000 Btuh - 50', 60', 70'
60,000 Btuh - 20', 30'	130,000 Btuh - 30', 40', 50'	200,000 Btuh - 50', 60', 70'
80,000 Btuh - 20', 30', 40'	150,000 Btuh - 40', 50', 60'	

compactSchwank

P40

Comfort and **savings** for Residential Garages

Pre-assembled heavy duty garage heater for an easy installation right out of the box. The **compactSchwank** is economical yet ideal for garage and workshop applications by keeping your garage floor, tools, and equipment warm and dry throughout the winter.



Heater Models A available [input/length]: 40,000 Btuh - 10'

IR Controls

ThermoControl Plus

Intelligent Infrared Heater Control

- Easy to use menu and graphical interface
- Minimal set up and configuration
- Handles up to 8 control zones for single and two-stage applications
- 8 programmable holiday periods per heating zone
- Data acquisition software offers reporting and analysis capabilities



TruTemp

Thermostat for Infrared Radiant Heaters

- Setback reduces control temperature by 9°F (13°C) when a building is unoccupied
- Setback is activated at night time by turning off lights
- Mounts on standard 4" (10cm) electrical box or directly to wall
- Tamper-proof option



Other thermostats available: ▪ line voltage control ▪ 24V Control ▪ moisture resistant controls ▪ 2-stage thermostatic control